

# SMARTEX<sup>®</sup> IS

## Permanent, Automated Electronic Leak Detection System

### Leak Detection for Bituminous Roofing In New Construction

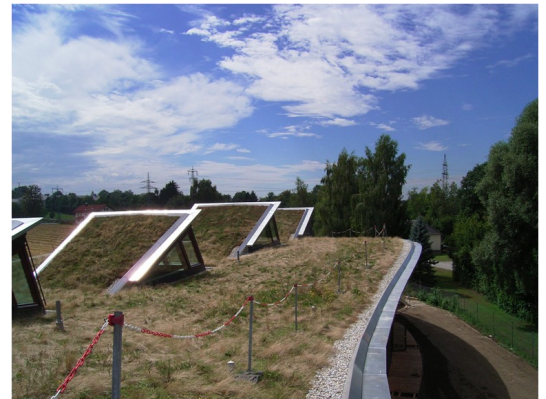
Smartex<sup>®</sup> IS provides the most comprehensive and accurate leak detection system available for hot or cold bituminous roofing membranes. When roofing integrity and investment protection is imperative, Smartex<sup>®</sup> IS is the right choice for automated monitoring 24/7.

Permanently installed under the roofing membrane, sensor modules are connected to an online computerized system that provides 24/7 monitoring while simultaneously pinpointing leak locations and time of occurrence. The computer system can be integrated with other building monitoring equipment.



### Smartex<sup>®</sup> IS At a Glance

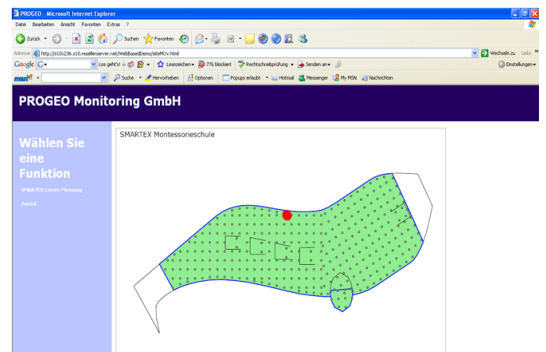
- Ideal for hot or cold bituminous roofing
- Integrated into the roofing system
- Provides 24/7 automated monitoring
- Immediate notification if a leak occurs
- Remediation can be immediate, eliminating the possibility of long term damage to the roof, building structure and contents



### How Smartex<sup>®</sup> IS Works

Smartex<sup>®</sup> IS utilizes an electro-resistive system specialized for use with hot or cold bituminous roofing. The core of the system is a heat resistant, conductive glass felt which is embedded with smart sensors under or between the bituminous layers in the waterproofing or roofing system. The system sends electrical impulses to the surface of the waterproofing and when water penetrates the membrane, electrical signals flow through the penetration. These signals are detected by the sensors, which are continuously polled by the computer and report their own condition as well as any electrical activity.

The computer evaluates the strength of the signal and the its duration and will immediately trigger an alarm if a leak has occurred. Notification is available online and is also sent to the system administrator at Progeo and the designated building engineer. The computer generates status reports continuously describing the condition of the roof as it controls the functions of the entire system.



*Example of online output showing location of leak. Exact coordinates and time of occurrence is also captured.*



WE PROVIDE CONFIDENCE