

# SMARTEX<sup>®</sup> LP

## High Voltage Testing For Use on Exposed Waterproofing

Progeo Smartex<sup>®</sup> LP electronic leak detection service pinpoints all penetrations in the waterproofing. Designed for use with new or existing roofing or waterproofing, Smartex<sup>®</sup> LP can also be used to test corners and sloped or vertical surfaces such as flashings and parapet walls. It is superior quality control and risk mitigation for new and existing waterproofing and recommended as part of a standard maintenance plan.

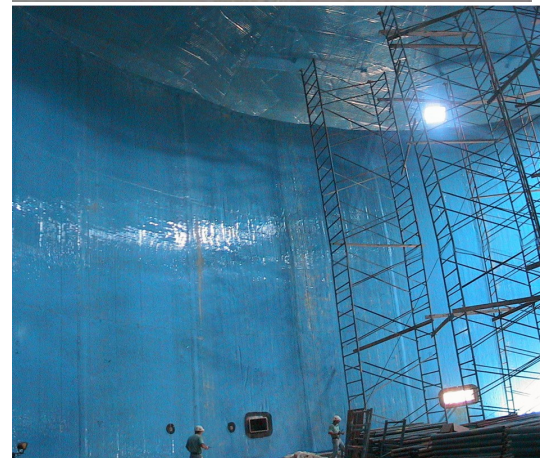
### Smartex<sup>®</sup> LP At a Glance

- Pinpoints all penetrations
- Far superior to flood or infra-red testing
- Dry test for bare waterproofing
- Superior quality control and risk mitigation
- Often used in conjunction with Smartex<sup>®</sup> VM
- Can be used for corners, sloped surfaces and vertical walls
- Detailed testing report provided
- Additional Smartex products available for permanent, automated leak detection
- Electronic leak detection cannot be used on EPDM waterproofing

### How it Works

Smartex<sup>®</sup> LP uses electrical current to pinpoint the location of leaks in waterproofing and flashing. Using an electrical broom, high voltage is applied to the top surface of the membrane. Penetrations are detected when the current passes through a hole in the membrane, completing the circuit with a ground such as the roof deck.

Smartex LP is often done in place of or in conjunction with Smartex<sup>®</sup> VM. It is ideal for working on coatings, waterproofing directly adhered to walls and decks and for finding penetrations around fasteners in insulated systems.



WE PROVIDE CONFIDENCE